

# CERTIFICATE OF LOCATION OF GOVERNMENT CORNER

County of Anoka

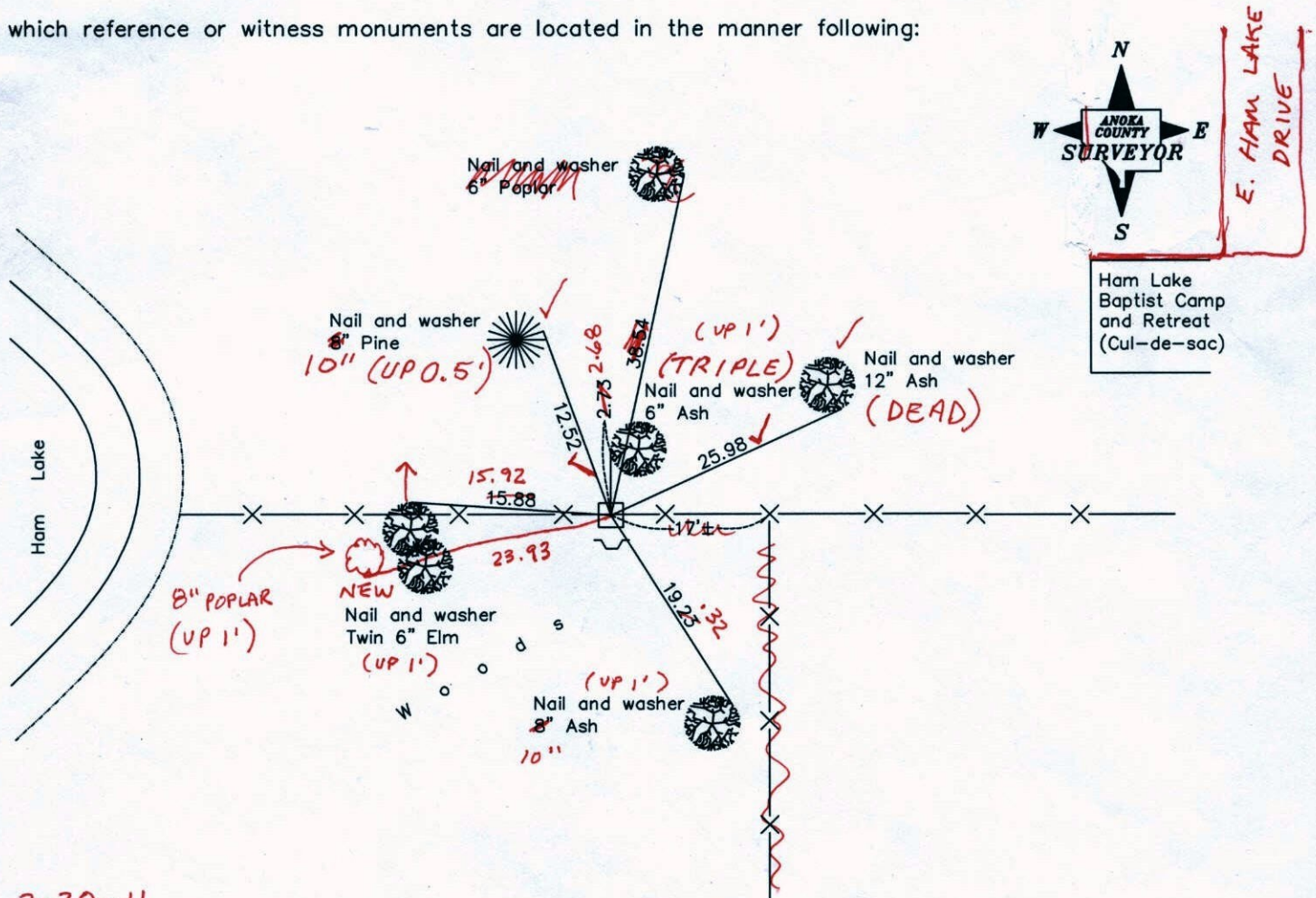
State of Minnesota

**Meander #9** Corner of Sec. 16 Township 32 Range 23  
 (on south line of section)

I hereby certify that on the 10th day of June, 1960, I found the described corner which was evidenced by a concrete monument

and I further certify that to perpetuate the location of said corner, I did, at the exact location thereof, place a permanent marker consisting of a concrete monument with sign and post on the south side (MON UP 0.1')

which reference or witness monuments are located in the manner following:



2-28-11  
 BK-SS  
 TAPED  
 Revised date

N.A.D. 1983 Coordinates  
 (1996 adjustment)

|         |
|---------|
| 8/13/96 |
| 2/05/02 |
|         |
|         |

| County Project Coordinates  |
|-----------------------------|
| Northing <u>180263.6848</u> |
| Easting <u>512706.3997</u>  |

| State Plane Coordinates |
|-------------------------|
| Y _____                 |
| X _____                 |

Date 2/05/02



# CERTIFICATE OF LOCATION OF GOVERNMENT CORNER

County of Anoka

State of Minnesota

MEANDER #9

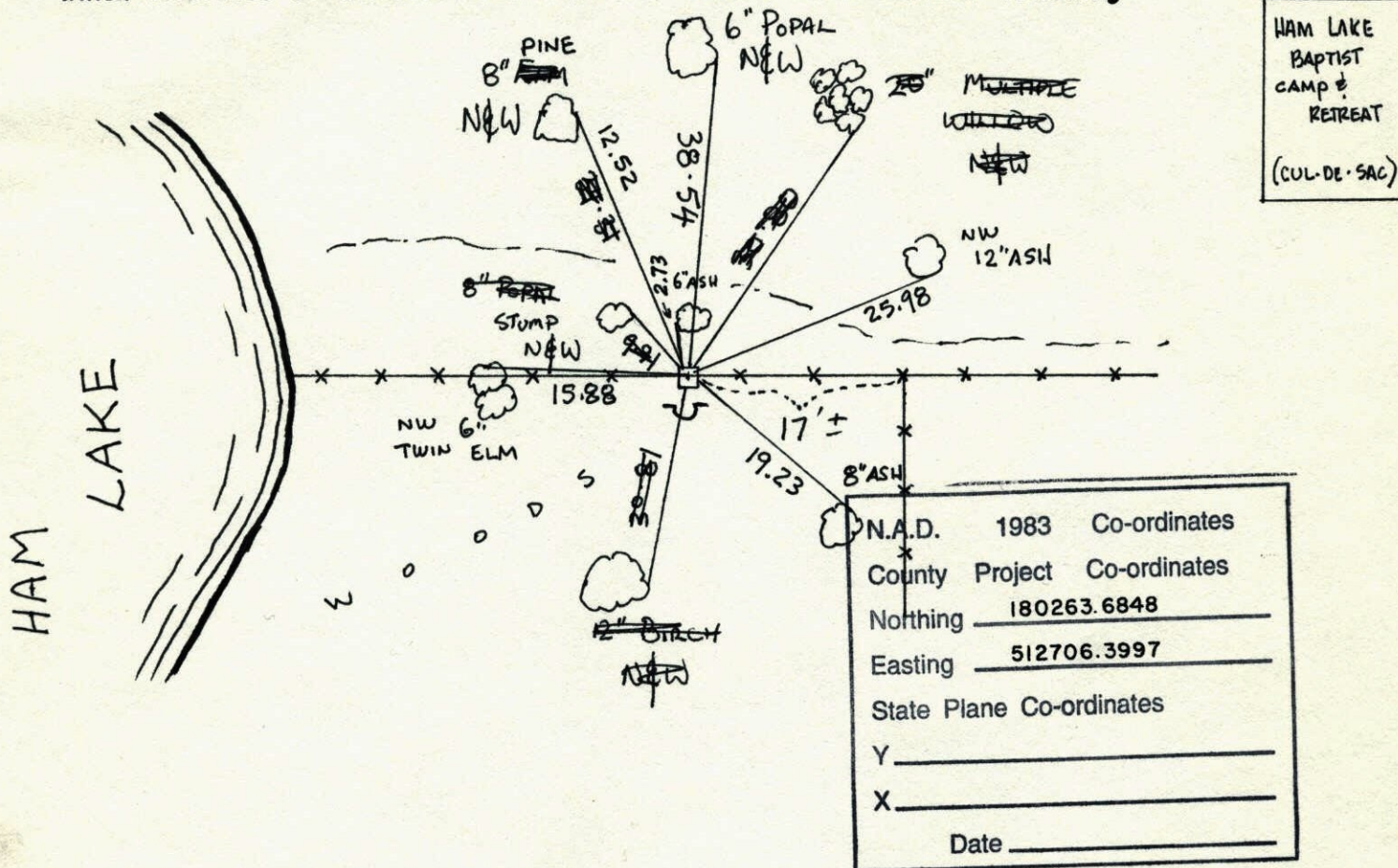
SOUTH LINE

Corner of Sec. 16 Township 32 Range 23

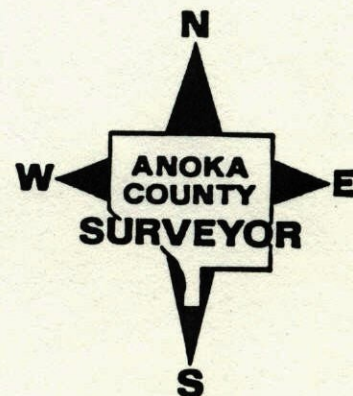
I hereby certify that on the 10 day of JUNE, 1960, I found the described corner which was evidenced by CONCRETE MONUMENT

and I further certify that to perpetuate the location of said corner, I did, at the exact location thereof, place a permanent marker consisting of CONCRETE MONUMENT SIGN AND POST ON SOUTH SIDE

which reference or witness monuments are located in the manner following:



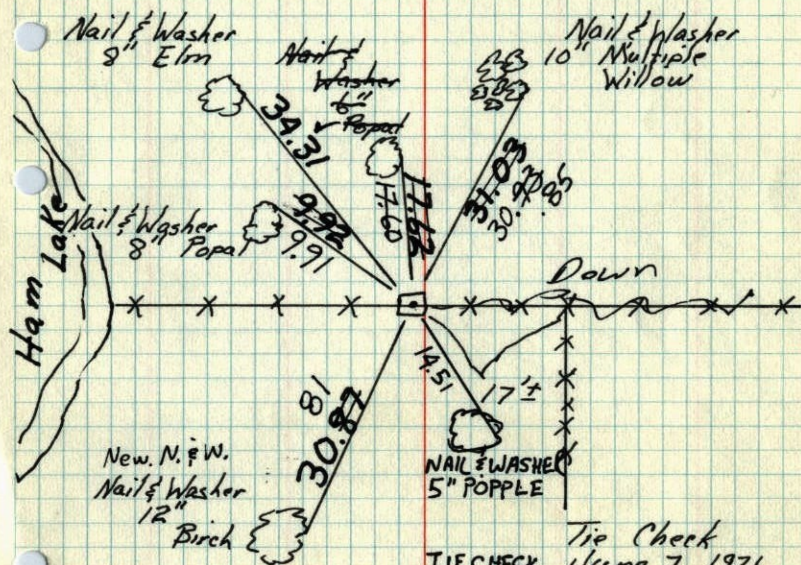
| Revised date | Revised date | Revised date |
|--------------|--------------|--------------|
| 1-3-91       |              |              |
| 6-1-93       |              |              |
| 8-13-96      |              |              |
| 2-5-02       |              |              |
|              |              |              |
|              |              |              |
|              |              |              |





M.C. #9 on South line of

Sec. 16 - T32 - R23

Concrete Monument up 0.3' on Eastside  
Ham Lake Iron Pipe on N. sideNew N. & W.  
Nail & Washer  
12" Birch

Tie Check  
June 7, 1971  
R. Briten  
J. Boettcher  
D. Vensas

June 10, 1960  
Bill Rogers  
Ralph Robinson

Tie Checks  
June 14, 1978  
D. Dahl  
B. Stephens  
M. Kistron

Tie Check  
June 18, 1975  
D. Dahl  
B. Sannerud  
G. Adams

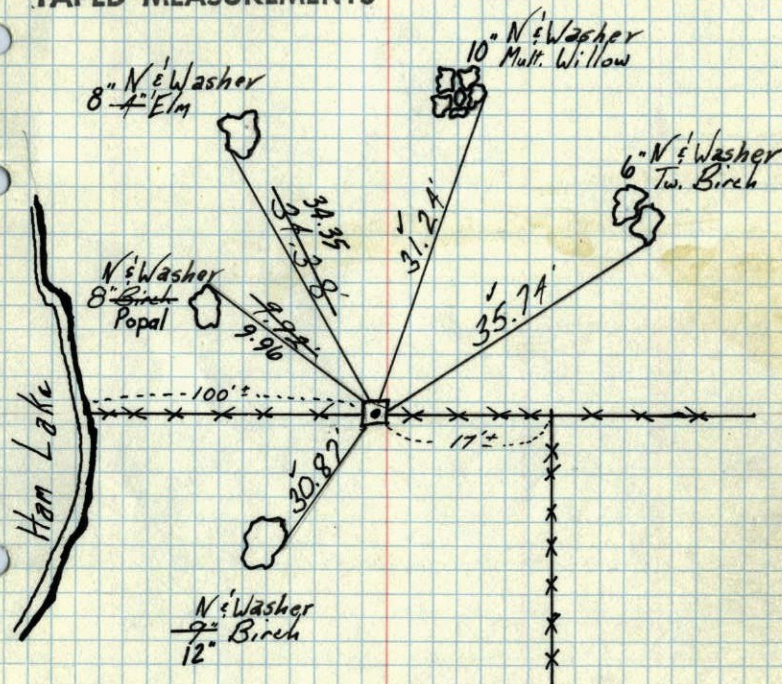
TEMPERATURE CORRECTED  
AND HORIZONTALLY  
TAPED MEASUREMENTS

MC #9 on South line of Sec. 16, T. 32 R. 23

Con. Mon. up .3' on Eastside Ham Lake

I.P. on N. side

TEMPERATURE CORRECTED  
AND HORIZONTALLY  
TAPED MEASUREMENTS



6/10/60 Retie 7/15/64 Temp. 70°F.

Bill Rogers M. D. Anderson  
Ralph Robinson R. Carlson

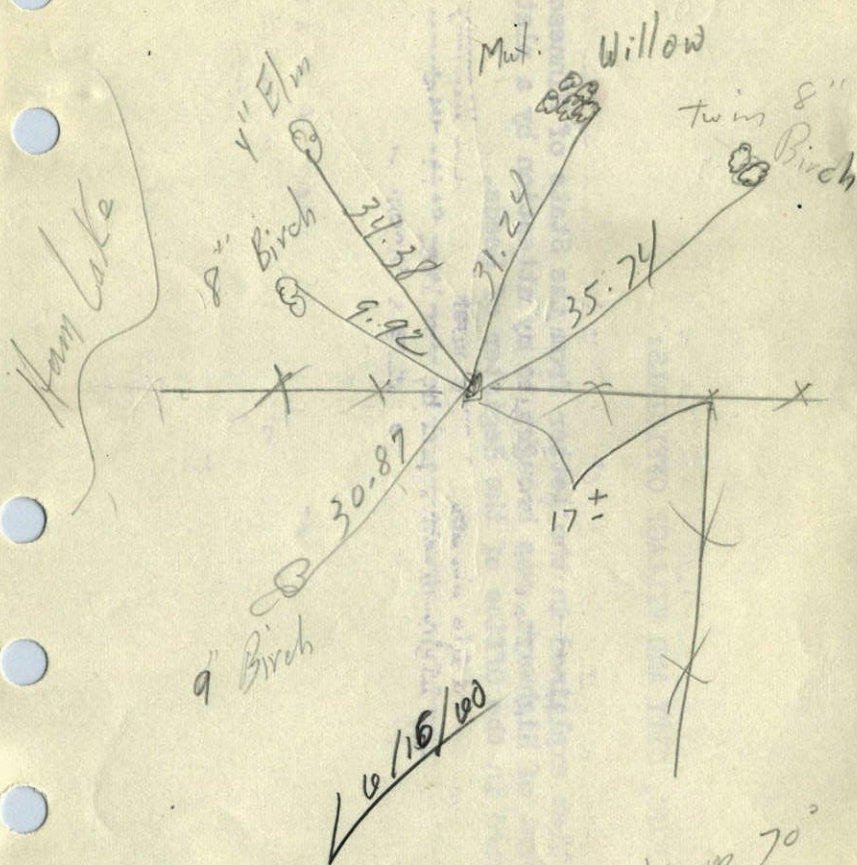
ROLAND W. ANDERSON  
COUNTY SURVEYOR  
ANOKA COUNTY, MINNESOTA



6/10/60

MC #9 E Side of Ham Lake  
T32 R23

Con Mon Up. 3'  
I.P. on N. side



6/15/60

Temp 70°  
Bill & Ruby

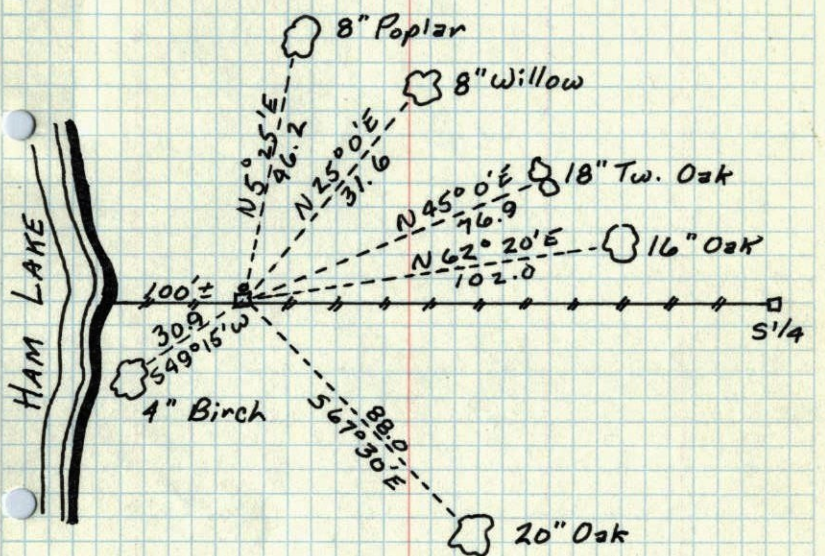
M.C. # 9 East Side Ham Lake

T 32 R 23

12/1/48

Conc. Mon. Up. 0.3'

IP on N. Side



|    |
|----|
| 16 |
| 21 |

N.C.P.